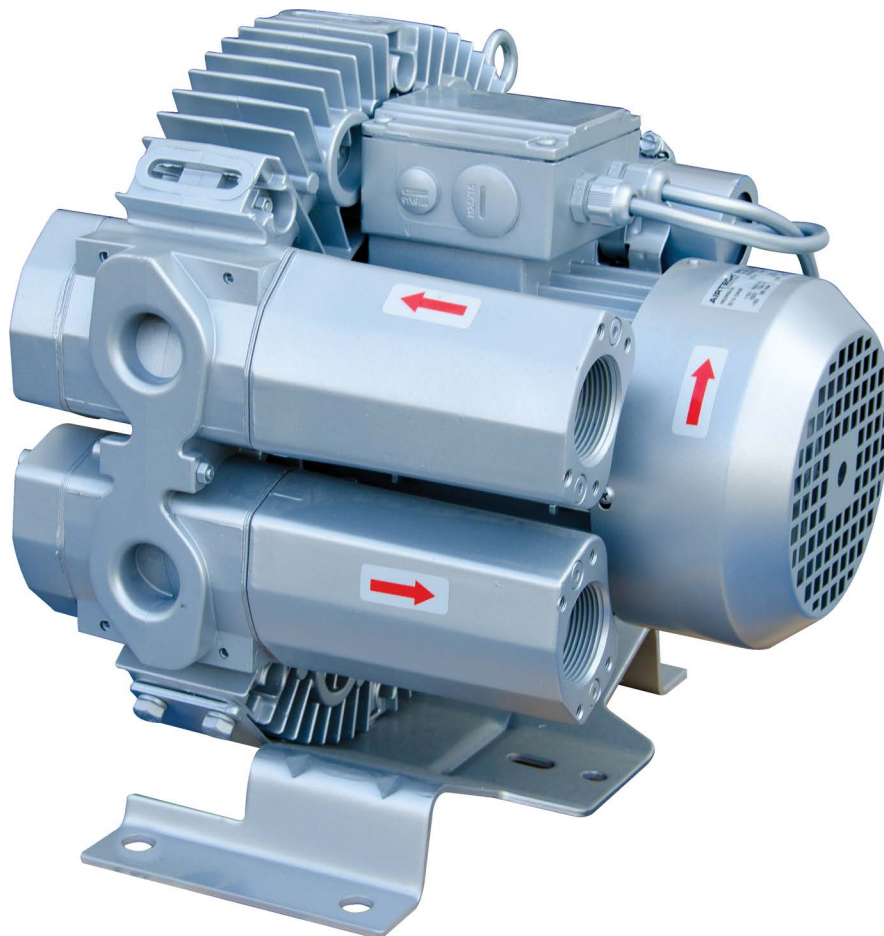




***High-Pressure Regenerative Blowers
Operating and Maintenance Instructions
(Part Nos. AHPB05–AHPB125)***



AQUATIC ECO-SYSTEMS™

Table of Contents

	Page
Message from the President.....	2
Safety Messages	2
Guidelines for Product Use.....	2
Wiring	2
Operating and Maintenance Instructions	2
Description.....	2
Application/Installation Environment	2
Installation	3
Minimum Clearances	3
Installation Procedure.....	3
Startup	3
Potential Risks	3
Maintenance and Servicing.....	3
Troubleshooting Chart	5
Exploded View of Blower	6
Wiring Diagrams.....	8
Standard Warranty.....	9

Dear Customer,

Thank you for your purchase of Sweetwater® equipment. The Sweetwater® name represents the finest blend of quality, performance and price on the market, all backed by our unequaled 3-year guarantee.

Pentair Aquatic Eco-Systems has delivered outstanding products and service since 1978. We have the knowledge and experience to help you accomplish your goals.

Best regards,



Todd Childress
President

PAES is open from 8 AM to 7 PM Monday–Thursday and 8 AM to 5 PM Friday. For technical help call 877-347-4788.

Safety Messages

Safety is important to us. We have included safety messages throughout this manual and for your protection. Please read and follow all directions.

A safety message has a safety alert symbol followed by an explanation of what the hazard is, what can happen and what you should do to avoid injury. This is the safety alert symbol:



WARNING

You will be killed or seriously injured if you don't follow instructions.



CAUTION

You can be killed or seriously injured if you don't follow instructions.



ELECTRICAL SHOCK HAZARD

Disconnect electrical power at the circuit breaker or fuse box before installing this product. Install where it will not come into contact with water or other liquids and where it will be weather protected. Electrically ground this product. Failure to follow these instructions can result in death, fire or electrical shock.

Guidelines for Product Use

- Pump only clean, dry air. Do not pump flammable or explosive gases or use in an atmosphere that contains such gases.
- Operate at 32–104°F (0–40°C).
- Protect unit from dirt and moisture.
- Blower must be installed with the properly sized inlet (included) and in-line filters, gauges and relief valves to protect against dirt and overheating.

Wiring

Make sure the wiring is done by a qualified electrician familiar with NEMA MG2 safety standards, national electric code and all local safety codes. Select fuses, motor protective switches or thermal protective switches to provide protection. Fuses act as short circuit protection for the motor, not as protection against overload. Incoming line fuses help to withstand the motor's starting current. Motor starters with thermal magnetic overload or circuit breakers protect the motor from overload or reduced voltage conditions. See the wiring diagram(s) attached to the product for required electrical information.

Check that the power source is correct in order to properly operate a dual-voltage motor.

Operating and Maintenance Instructions

Description

All regenerative blowers are dynamic compression devices and utilize a noncontacting impeller to accelerate the gas and a specially designed housing to compress the gas. Cooling is accomplished by using the motor fan to blow air over the housing. In larger models, the housing is specially designed with cooling fins to allow a wider range of operation. Both the inlet and outlet ports have built-in silencers and mesh screens. Both the inlet and outlet have an inside connection thread corresponding to DIN ISO 228. On larger units, multiple suction and discharge connection configurations may be available.

The blower shares a bearing with the motor. The seal between the bearing and the motor is not gas tight in most models, therefore these blowers are not recommended for handling of toxic or explosive gases. Contact Aquatic Eco-Systems for additional options if explosive or toxic gases will be handled.

A full range of accessory items are available, including vacuum or pressure relief valves, check valves, suction filters, motor starters, vacuum/pressure cross-over valves and in-line filters.

Application/Installation Environment



CAUTION

These blowers are designed for use in general industry. Suitable personnel protection according to OSHA requirements is provided, but the equipment should not be operated in residential settings. Sweetwater® blowers can be operated as either vacuum pumps or compressors. They are suitable for use with air having a relative humidity up to 90%, but not generally suitable for handling corrosive or erosive gases. Special versions for toxic or aggressive gases may be available. Use of the standard blower in aggressive environments may cause damage to the blower or exposure to gases being handled in the local environment.



CAUTION

Dangerous (flammable or explosive) or aggressive (corrosive) gases should not be handled by the standard blower.

Handling of flammable or aggressive gases and vapors may be possible by using a specially configured or modified blower. Contact factory for additional information. The standard blower is not suitable for operation in explosive environments as defined by NFPA 70. Contact factory for assistance.



CAUTION

The ambient and suction temperatures should be between 40° and 104°F. For temperatures outside this range, please contact the factory. The maximum permissible pressure difference for vacuum or pressure is dependent on the motor rating and power supply frequency. Operation at an ambient temperature of 104°F (40°C) is the maximum permissible, and will result in a reduction of 10% of maximum vacuum or pressure attainable by the unit.

Installation

As illustrated in Figure 1, Sweetwater® High-Pressure blowers can be installed in any physical configuration.



CAUTION

Regenerative blowers can have surface temperatures in excess of 120°F. To avoid burns or other physical injury, take care to avoid contact with the surfaces of the blower during and immediately after operation. To ensure adequate cooling of the blower during operation, install the blower with the minimum clearance as indicated in the table below.

Minimum Installation Clearances

Range	Distance from fan guard to closest obstruction (inches/mm)	Distance from cover (opposite of fan) to closest obstruction (inches/mm)
AHPB05–AHPB45	1.3/34	1.18/30
AHPB50–AHPB125	2.1/54	1.57/40

Please note that it may be desirable, where possible, to allow for larger clearances to allow access for maintenance or repair personnel. The noted clearances are to ensure adequate airflow for cooling only and are a minimum requirement.

Failure to allow for the noted clearances may result in premature failure of the blower due to lack of cooling, even if all other precautions are taken as recommended. For specific advice about installations requiring closer clearances, please contact AES for recommendations.

Sweetwater® regenerative blowers can be mounted in any configuration, either horizontally or vertically mounted. It is not usually necessary to bolt the smaller blowers to a rigid surface during operation, though this may be desirable to reduce pipe vibration, movement and noise. Larger models should be bolted in place, especially when installed vertically, to prevent possible rotation, damage or injury due to startup torque.



CAUTION

For installations at altitudes greater than 3,250' above sea level there will be a loss in capacity. Please contact your factory representative for assistance in determining the extent of the loss of capacity likely at your specific location.



WARNING

Be sure to follow all local codes and regulations with respect to installation and operation of the blower. The blower motor should be wired to a branch circuit disconnect and all other safety devices recommended by the relevant sections of NFPA 70, National Electrical Code, and in accordance with all applicable state and local regulations and requirements.

Installation Procedure

Perform the installation exactly in accordance with the following steps:

1. For vacuum operation, connect the suction pipe to connection A, and for pressure operation connect the pressure pipe to connection B (see Figure 1). Install startup screens before startup to protect pump from debris.



CAUTION

Design your piping system to avoid unnecessary pressure loss, which may significantly affect the operation of any regenerative blower. Contact your AES representative for assistance in designing and configuring an appropriate piping system for your application. For alternation between vacuum and pressure in any application, changeover valves are available. Use of the changeover valve allows the same connection to be used for both vacuum and pressure.

2. Electrical should be confirmed by examination of the motor data plate on your blower. The motors feature Class F insulation as a standard and are UL-recognized for applications in both Canada and the United States (CUL). Motors are IEC design IP55, equal to a NEMA TEFC motor design. The connection diagram for the motors can be found inside the terminal box cover. Be sure to confirm that your electrical supply has sufficient capacity to operate the blower according to the nameplate requirements.
3. A magnetic motor starter should always be used to connect the motor to the power supply. It is advisable to use thermal overload motor starters to

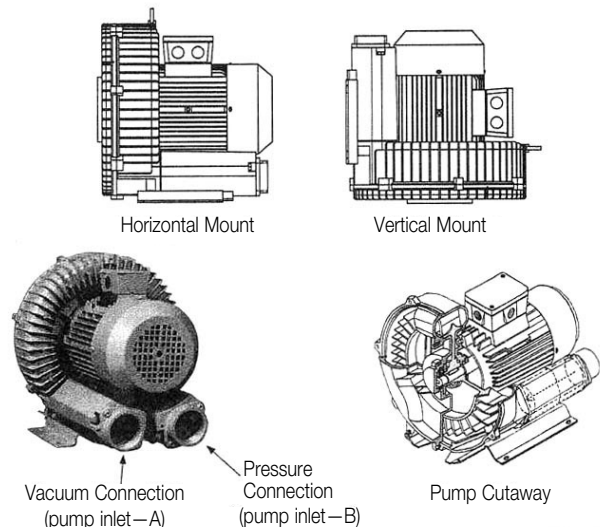


Figure 1

provide maximum protection for the motor and wiring. All cabling used on starters should be secured with good quality cable clamps.

We recommend that the motor starters used feature a time delay trip on high amperage to avoid nuisance trips on startup. When the unit is started cold, over amperage may be experienced for a short time due to the higher resistance of the windings at lower temperatures.

If using a change over or solenoid valve, ensure that the voltage connected to the valve matches that shown on the valve instructions or nameplate. Most valves are rated for 115V/60 Hz or 230V/50 Hz. Connection of these valves to higher voltages may result in immediate valve failure.



WARNING

The electrical installation should be made by a qualified electrician and in complete compliance with all NFPA 70 (National Electrical Code) requirements along with all state and local code requirements. The main disconnect and motors starters are assumed to be provided by others.

4. Install the necessary relief valves and confirm their proper operation.

Startup



CAUTION

Do not start the blower motor more than 10 times in one hour. If multiple and frequent startups are required by your application, install a minimum run timer in the motor control circuit to avoid decreased motor life and possible fire due to over-starting of the motor.

1. Before operation, confirm the correct direction of rotation by jogging (switching rapidly on and off) the motor and observing the motor fan rotation in the same direction as the arrow. If the direction of rotation is incorrect, lock out the power and switch two leads (three phase) or rewire (single phase) to effect the opposite rotation direction. Recheck the direction of rotation before proceeding.
2. When checking the current draw of the motor with an ammeter, be sure to confirm the voltage at the motor junction box. Low voltage conditions may result in difficulty starting or in unexpected motor failure or motor starter trips.

Potential Risks for Operators

Noise emission: Hearing protection is not normally required at the expected noise generation levels; however, local conditions may result in higher ambient noise. If this is the case and local noise exceeds OSHA recommended levels for expected exposure time (typically 85 dBA for eight hours), hearing protection should be used.

Maintenance and Servicing



WARNING

Be sure the power supply is disconnected and locked out before attempting to do any maintenance on the unit. It is critical that the unit be locked out from starting during maintenance as severe injury or death could result from exposure to high voltage or rotating parts.



CAUTION

Allow the blower to cool to a surface temperature of less than 100°F before attempting maintenance. Prolonged exposure to temperatures above 120°F can cause severe burns.

Clean the blower surfaces periodically to avoid build up of dust or other debris. Build up of debris can cause overheating and premature failure of the blower. If an inlet filter is being use, ensure that it remains clean during operation by examining the filter cartridge for debris build up. Replace dirty or clogged filter.

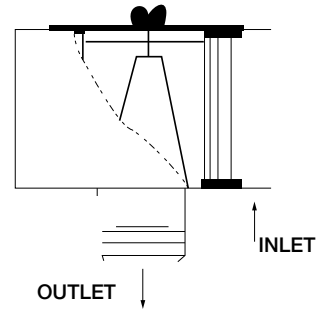


figure 2

The filter element should be cleaned monthly or as frequently as required by local conditions. Excessive pressure drop will develop from use of clogged or dirty filters. This pressure drop will degrade blower performance and increase operating temperatures, leading possibly to premature pump failure.



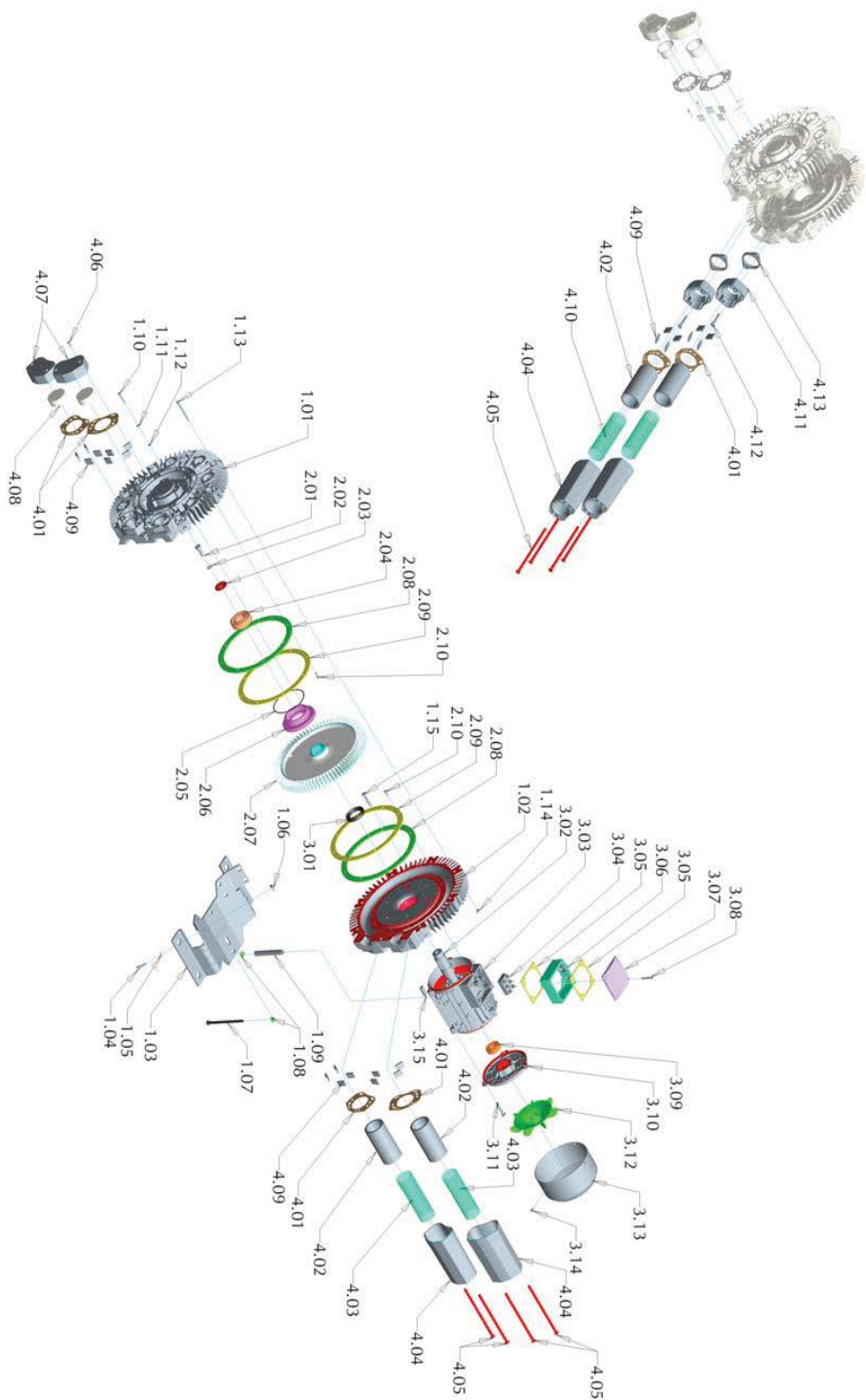
CAUTION

Do not attempt to check the filter during operation of the blower. Only check the filter after disconnecting the power from the blower and locking out the power to prevent an unexpected start.

Troubleshooting Chart

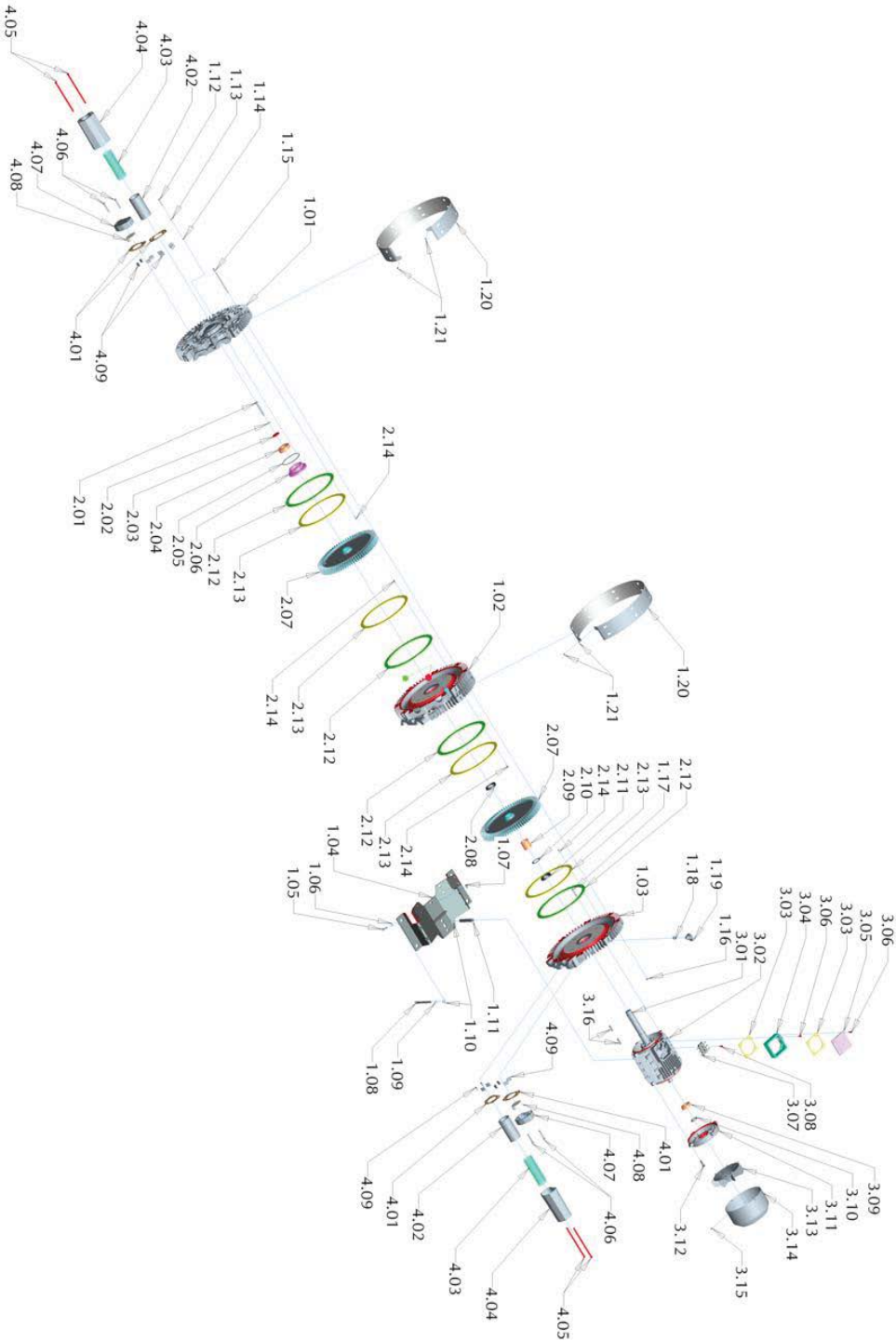
Fault	Cause	Remedy	Responsible Party
Motor does not start, no noise.	Two or more power legs interrupted.	Check fuses, terminals, etc., for source of interruption and correct.	Electrician
Motor does not start, humming noise.	One power supply lead interrupted.	Check fuses, terminals, etc., for source of interruption and correct.	Electrician
	Impeller is jammed.	Open blower cover, remove debris and clean. Check impeller clearance and reset if necessary.	Service Technician
	Defective bearing.	Replace defective bearing.	Service Technician
Motor starter trips at startup.	Incorrect starter setting.	Ensure starter setting is correct (check current on nameplate)	Electrician
	Winding short circuit.	Megger motor	Electrician
	Motor overloaded due to operation of pump at excessive differential pressures.	Inspect filters, mufflers and connection pipes. Clean as required. Check relief valve operation. Reset or replace as necessary.	Operator
	Impeller jammed.	See above fault Motor does not start, humming noise, cause jammed impeller.	Operator
No vacuum or pressure.	Severe leak in system.	Close off pump and run deadheaded to confirm pump is operating properly. If so, find and fix leak in the system.	Operator
	Wrong rotation.	Check air flow direction and change direction of rotation if necessary.	Operator/Electrician
Insufficient air flow.	System too small.	Use larger system.	Operator
	Inlet piping too long or too small.	Increase pipe diameter to reduce pressure loss in inlet piping. Contact AES for assistance in determining correct pipe size.	Operator
	Leak at connection to vacuum system.	Check for leaks and repair if necessary.	Operator
	Change in impeller geometry due to erosion.	Clean impeller and examine for wear. Replace if necessary.	Service Technician
	Inlet filter clogged.	Change filter element; remove clog.	Operator
	Relief valve incorrectly set.	Reset or replace relief valve. Contact AES for assistance.	Operator
Abnormal flow noises.	Flow speed too high.	Clean pipes or use larger pipes to connect unit to process.	Operator
	Muffler soiled.	Clean muffler inserts, replace if necessary.	Operator
Abnormal running noise.	Ball bearing defective or insufficient lubrication on bearing.	Re-grease or replace bearing as required.	Service Technician

Sweetwater® High-Pressure Blowers Exploded View (Single-Stage)



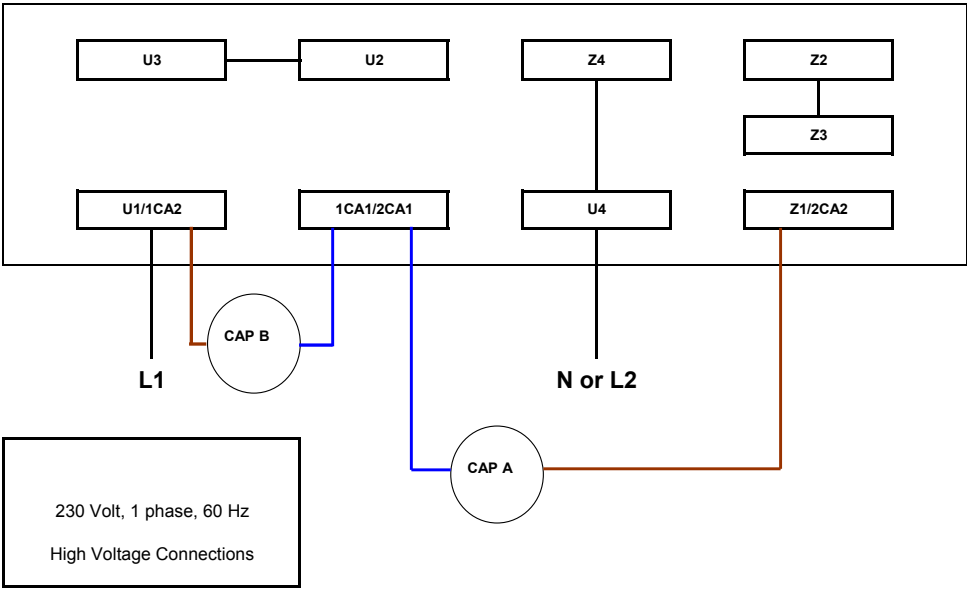
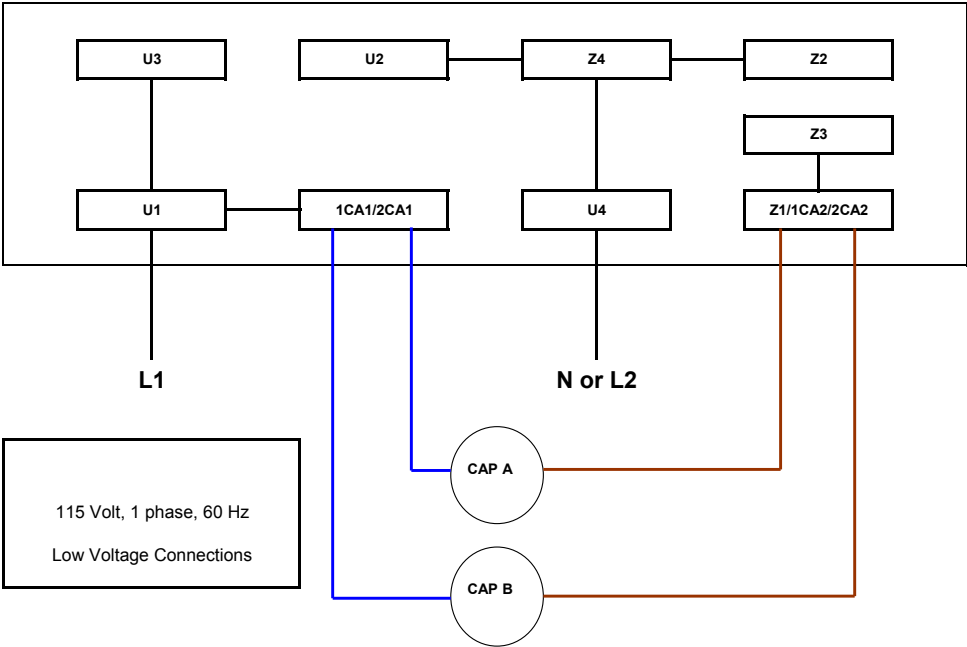
No./Qty.	Description
1.01	Cover
1.02	Housing
1.03	Housing Plate
1.04	Rear Mounting Screw
1.05	Flange Mounting Washer
1.06	Mounting Plate Nut
1.07	Motor Support Screw
1.08	Motor Support Washer
1.09	Shaft Support Washer
1.10	Bearing Cover Screw
1.11	Bearing Cover Washer
1.12	Bearing Ring Seal
1.13	Cover Mounting Screw
1.14	Cover Mounting Nut
1.15	Motor Mounting Screw
1.16	Motor Mounting Nut
1.17	Shaft Lock Washer
1.18	Disc
1.19	Bearing
1.20	Bearing Cover O-Ring
1.21	Impeller
1.22	Teflon Seal
1.23	Retaining Ring
1.24	Inner Seal Screw
1.25	Shaft Seal Ring
1.26	Motor Rotor
1.27	Stator
1.28	Terminal Block
1.29	Motor Terminal Box Gasket
1.30	Terminal Box
1.31	Cover For Terminal Box
1.32	Terminal Box Cover Screw
1.33	Rear Bearing
1.34	End Shield
1.35	External Fan
1.36	Fan Cowl
1.37	Fan Cowl Screw
1.38	Parallel Key
1.39	Silencer Gasket
1.40	Silencer Insert Filler
1.41	Silencer Gasket
1.42	Silencer Insert Filler
1.43	Silencer Gasket
1.44	Silencer Insert Filler
1.45	Flange Cap
1.46	Flange Filler
1.47	Flange
1.48	Silencer Insert
1.49	Flange Screw
1.50	Flange Gasket

Sweetwater® High-Pressure Blowers Exploded View (Two-Stage)

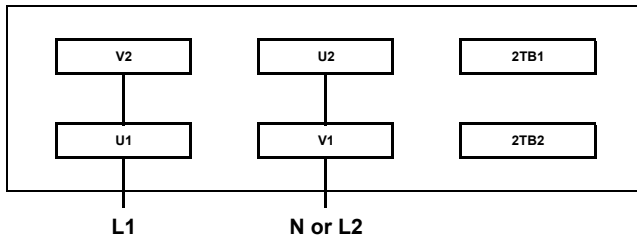


No./Qty.	Description
1.01	1 Cover
1.02	1 Center Section
1.03	1 Housing
1.04	1 Mounting Plate
1.05	4 Plate Mounting Screw
1.06	4 Mounting Plate Washer
1.07	4 Mounting Plate Nut
1.08	1 Stator Support Screw
1.09	1 Stator Support Lock Washer
1.10	2 Stator Support Washer
1.11	1 Stator Support Sleeve
1.12	3 Bearing Cover Screw
1.13	3 Bearing Cover Washer
1.14	3 Bearing Ring Seal
1.15	8 Cover Mounting Screw
1.16	8 Cover Mounting Nut
1.17	4 Motor Mounting Screw
1.18	1 Lifting Ring Nut
1.19	1 Lifting Ring
1.20	2 Blower Cowl
1.21	4 Blower Cowl Screw
2.01	1 Shaft Screw
2.02	1 Shaft Lock Washer
2.03	1 Disc
2.04	1 Bearing
2.05	1 Bearing Cover O-Ring
2.06	1 Bearing Cover
2.07	2 Impeller
2.08	1 Rotary Shaft Seal
2.09	1 Sleeve
2.10	1 Disk
2.11	1 Shaft Seal Ring
2.12	4 Teflon Seal
2.13	4 Retaining Ring
2.14	32 Inner Seal Screw
3.01	1 Motor Rotor
3.02	1 Stator
3.03	2 Motor Terminal Box Gasket
3.04	1 Terminal Box
3.05	1 Cover For Terminal Box
3.06	8 Terminal Box Screw
3.07	1 Terminal Block
3.08	1 Terminal Block Screw
3.09	1 Rear Bearing
3.10	1 End Shield
3.11	1 End Shield Disk
3.12	4 End Shield Screw
3.13	1 External Fan
3.14	1 Fan Cowl
3.15	4 Fan Cowl Screw
3.16	2 Parallel Key
4.01	4 Silencer Gasket
4.02	2 Silencer Inset Filler
4.03	2 Silencer Inset
4.04	2 Silencer Casting
4.05	4 Silencer Screw
4.06	2 Flange Screw
4.07	2 Flange Cap
4.08	2 Flange Filler
4.09	16 Filler

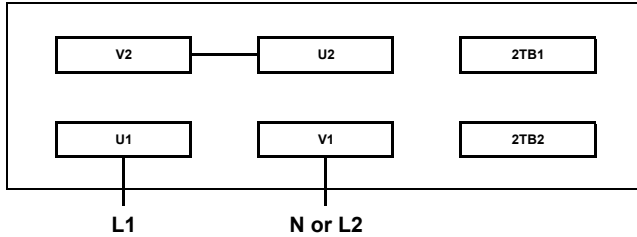
Wiring Diagrams



115 Volt, 1 phase, 60 Hz



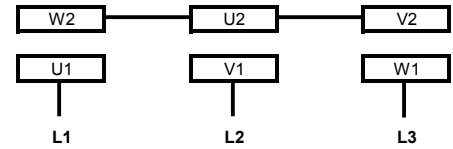
230 Volt, 1 phase, 60 Hz



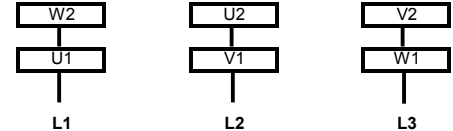
2TB1 and 2TB2 are connections for thermal protection,
Do not connect to 2TB1 and 2TB2 when using power cord

3-Phase

Y High Voltage, 415-460 Volts



Δ Low Voltage, 220-250 Volts



Standard Warranty

Sweetwater® regenerative blowers, when properly installed and operated under normal conditions of use, are warranted by PAES to be free from defects in material and workmanship for a period of three (3) years from ship date. In order to obtain performance under this warranty, the buyer must promptly give verbal or written notice of the defect by calling the PAES Returns Department at 877-347-4788, sending a fax to 407-886-6787 or by email to PAES.General@Pentair.com. The buyer is responsible for freight charges, both to and from PAES, in all cases.

PAES warranties do not extend to any goods or parts which have been subjected to misuse, modification, lack of maintenance, neglect, transit damage or damage resulting from lightning, natural or accidental flooding, fire or accident. Operating use or circumstances outside normal conditions, such as high heat or high moisture, may also be excluded from this warranty.

THIS EXPRESS WARRANTY EXCLUDES ALL OTHER WARRANTIES OR REPRESENTATIONS EXPRESSED OR IMPLIED BY ANY LITERATURE, DATA OR PERSON. THE MAXIMUM LIABILITY OF AES UNDER THIS EXCLUSIVE REMEDY SHALL NEVER EXCEED THE COST OF THE SUBJECT PRODUCT AND AES RESERVES THE RIGHT, AT ITS SOLE DISCRETION, TO REFUND THE PURCHASE PRICE IN LIEU OF REPAIR OR REPLACEMENT.

PAES WILL NOT BE RESPONSIBLE OR LIABLE FOR INDIRECT OR CONSEQUENTIAL DAMAGES OF ANY KIND, however arising, including but not limited to those for use of any products, loss of time, inconvenience, lost profit, labor charges or other incidental or consequential damages with respect to persons, animals, business or property, whether as a result of breach of warranty, negligence or otherwise. Notwithstanding any other provision of this warranty, BUYER'S REMEDY AGAINST AES FOR GOODS SUPPLIED OR FOR NONDELIVERED GOODS OR FAILURE TO FURNISH GOODS, WHETHER OR NOT BASED ON NEGLIGENCE, STRICT LIABILITY OR BREACH OF EXPRESS OR IMPLIED WARRANTY IS LIMITED SOLELY, AT THE OPTION OF AES, TO REPLACEMENT OF OR CURE OF SUCH NONCONFORMING OR NONDELIVERED GOODS OR RETURN OF THE PURCHASE PRICE FOR SUCH GOODS AND, IN NO EVENT, SHALL EXCEED THE PRICE OR CHARGE FOR SUCH GOODS. AES EXPRESSLY DISCLAIMS ANY WARRANTY OF MERCHANTABILITY OR FITNESS FOR A PARTICULAR USE OR PURPOSE WITH RESPECT TO THE GOODS SOLD. THERE ARE NO WARRANTIES WHICH EXTEND BEYOND THE DESCRIPTIONS SET FORTH IN THIS WARRANTY, notwithstanding any knowledge of PAES regarding the use or uses intended to be made of goods, proposed changes or additions to goods or any assistance or suggestions that may have been made by PAES personnel.

Unauthorized extensions of warranties by the customer shall remain the customer's responsibility.

CUSTOMER IS RESPONSIBLE FOR DETERMINING THE SUITABILITY OF PAES PRODUCTS FOR CUSTOMER'S USE OR RESALE OR FOR INCORPORATING THEM INTO OBJECTS OR APPLICATIONS THAT THE CUSTOMER DESIGNS, ASSEMBLES, CONSTRUCTS OR MANUFACTURES.

This warranty can be modified only by PAES personnel by signing a specific, written description of any modifications.



AQUATIC ECO-SYSTEMS™